



SURANA COLLEGE
(AUTONOMOUS)

2021-22
AQAR

Annual Quality Assurance Report

Criterion IV – Infrastructure and Learning Resources

Key Indicator – 4.1 Physical Facilities

Metric No. 4.1.1

The Institution has adequate infrastructure and physical facilities for teaching-learning, viz., classrooms, laboratories, computing equipments etc.



ESTD. 1995
SURANA COLLEGE

(AUTONOMOUS)
Moulding Character & Careers

Affiliated to Bangalore University
Re-accredited by NAAC with A+ Grade
Recognized under 2(f) & 12(B) of UGC
Accredited by IAO & Certified by ISO

Certification

This is to certify that, the Geotagged Photographs pertaining to the Institution's infrastructure and physical facilities for teaching-learning, viz., classrooms, laboratories, computing equipment etc. are appended herewith Page No-1 to 24.

Bangalore.

Date: 18-05-2022

Bhauzif

PRINCIPAL
SURANA COLLEGE
16, South End Road
Bangalore - 560 004



4.1.1 Facilities for Teaching- Learning



Surana College South End Campus





Kengeri Campus

No:16, South End Road, Bengaluru-560004 &, No: CA 17, Kengeri Satellite Town, Bengaluru-560060



080-26642292
080-26541095



www.suranacollege.edu.in



iqac@suranacollege.edu.in



Classrooms with ICT @ South End Campus



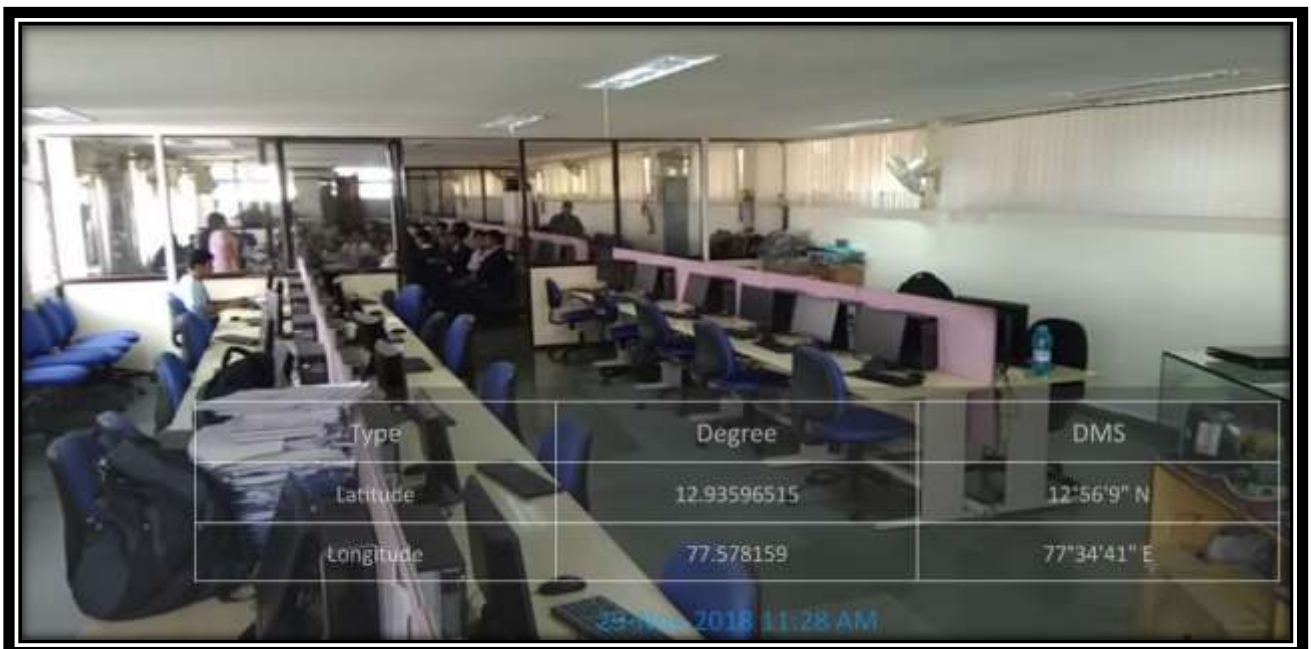


ICT Enabled Classroom @ Kengeri Campus





Botany Lab @ South End Campus



Computer Lab @ South End Campus



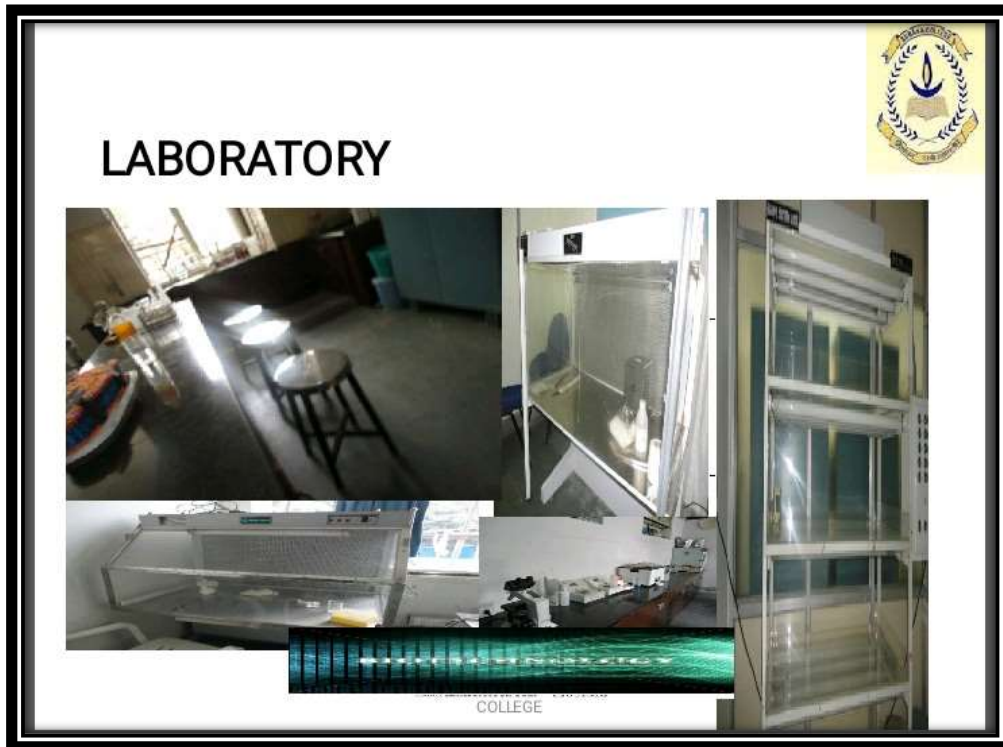


Chemistry Lab @ South End Campus



Physics Lab @ South End Campus





LABORATORY

Tissue Culture Lab @ South End Campus



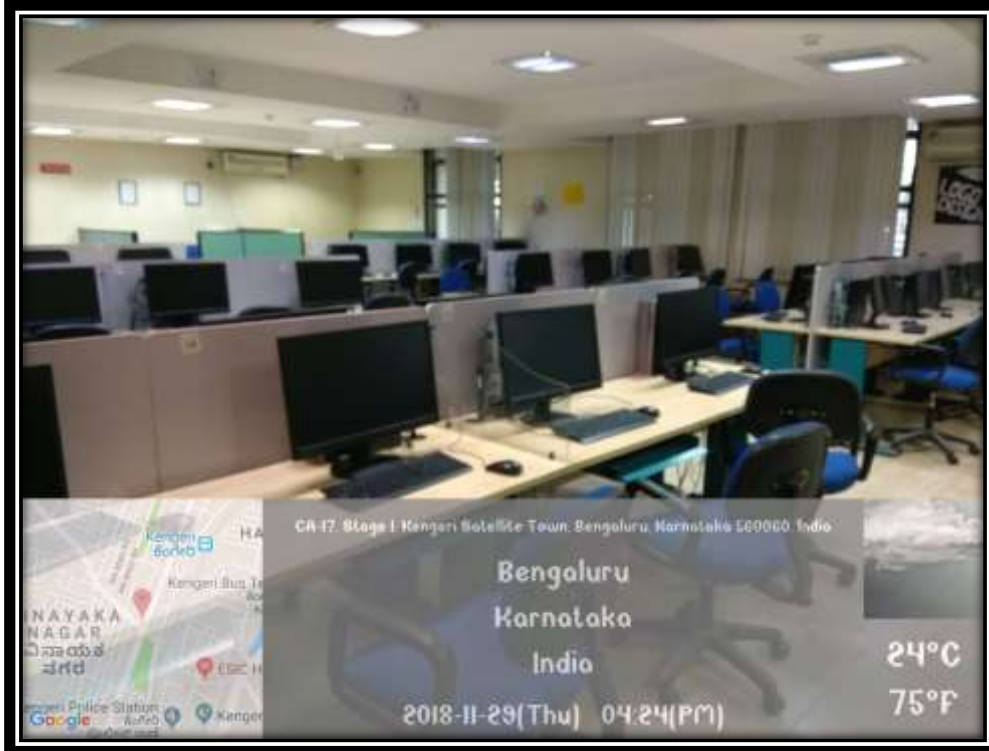
BT Lab @ South End Campus





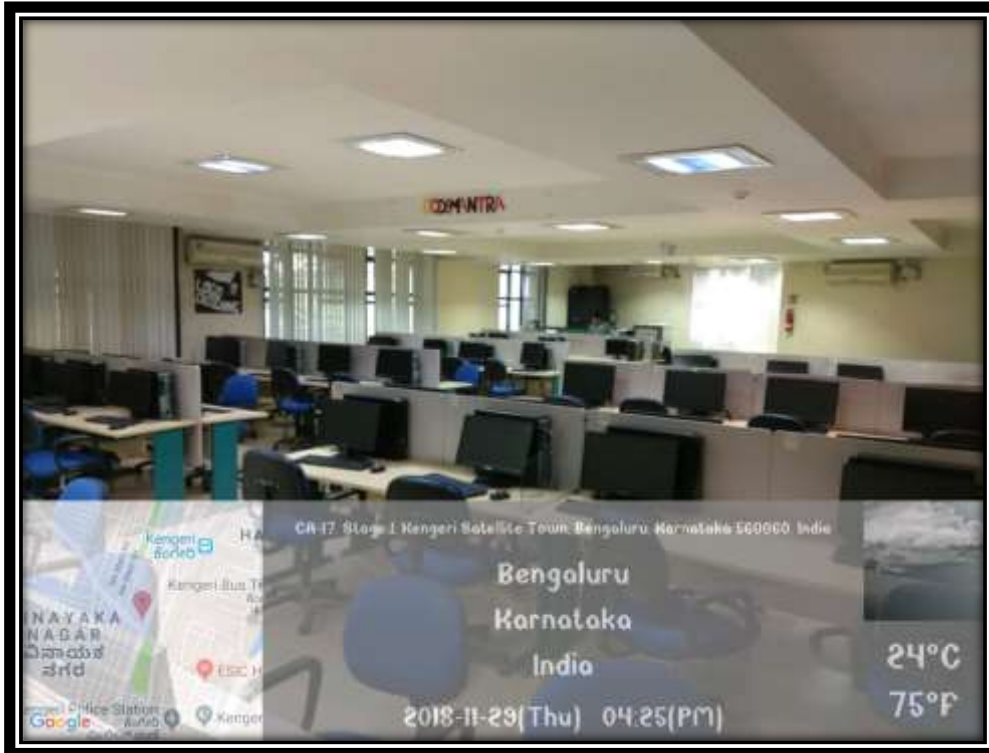
Psychology Lab @ Kengeri Campus





MCA Lab @ Kengeri Campus





MBA Lab @ Kengeri Campus





18, S End Rd, Jayanagar, Bengaluru,
Karnataka 560070, India

Latitude	Longitude
12.93645°	77.578166°
Local 10:37:19 AM	Altitude 832.4 meters
GMT 05:07:19 AM	Monday, 15-11-2021

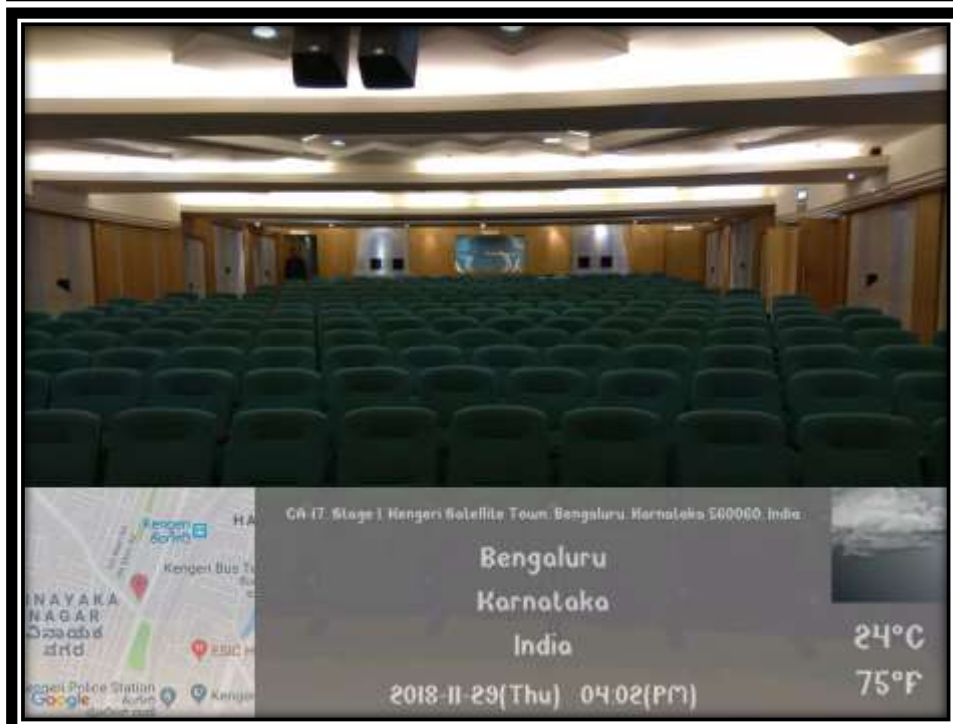
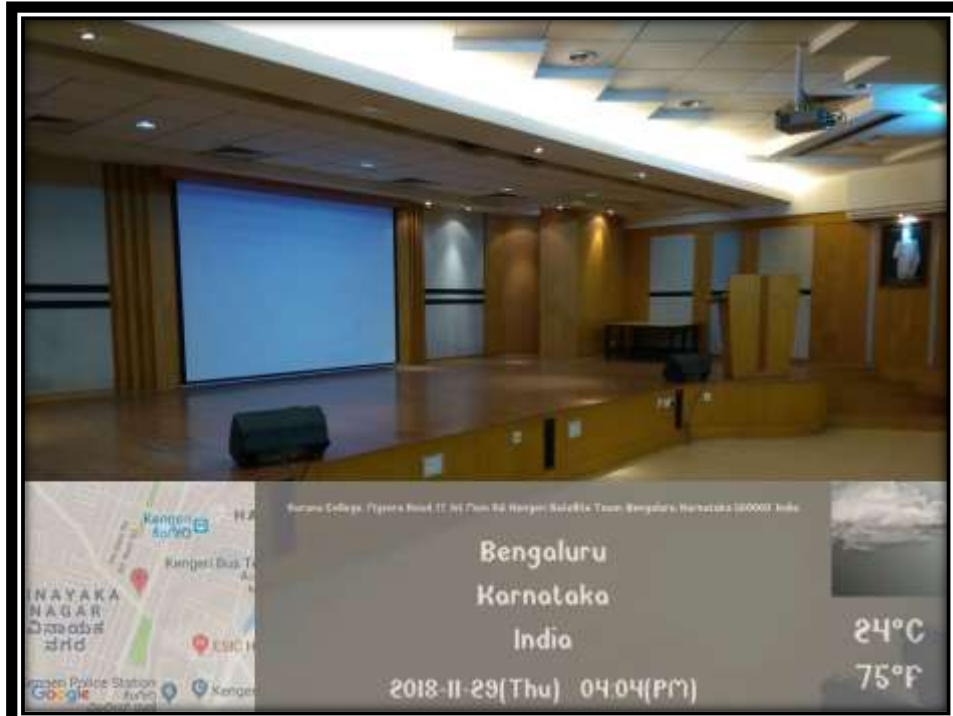


18, S End Rd, Jayanagar, Bengaluru,
Karnataka 560070, India

Latitude	Longitude
12.9364733°	77.5781778°
Local 10:38:56 AM	Altitude 832.4 meters
GMT 05:08:56 AM	Monday, 15-11-2021

Seminar Hall @ South End Campus





Auditorium @ Kengeri Campus





Seminar Hall @ Kengeri Campus





Board Room @ South End Campus



IQAC Room @ South End Campus





Board Room @ Kengeri Campus





NSS Unit @ South End Campus





16-12, 2nd Cross Rd, Byrasandra,
Jayanagar, Bengaluru, Karnataka
560004, India

Latitude	Longitude
12.93602101°	77.57836427°
Local 10:33:08 AM	Altitude 843.05 meters
GMT 05:03:08 AM	Monday, 15-11-2021





16-12, 2nd Cross Rd, Byrasandra,
Jayanagar, Bengaluru, Karnataka
560004, India

Latitude	Longitude
12.93601931°	77.57835947°
Local 10:33:18 AM	Altitude 840.69
GMT 05:03:18 AM	meters
	Monday, 15-11-2021

Canteen (South End Campus)





Canteen (Kengeri)

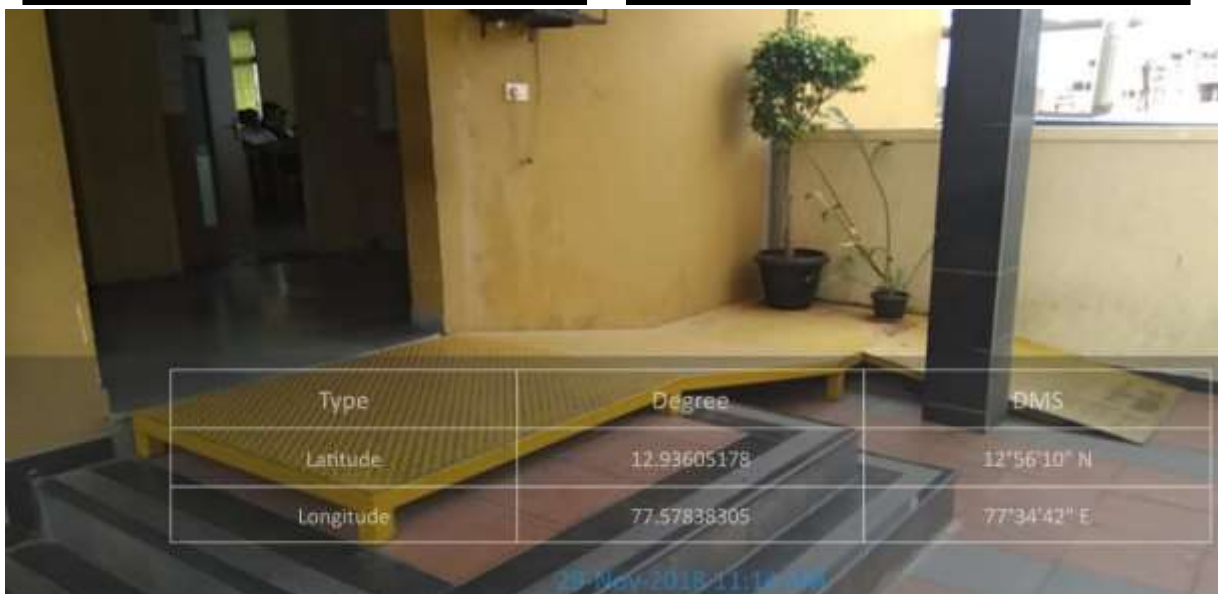




Type	Degree	DMS
Latitude	12.93641119	12°56'11" N
Longitude	77.57827176	77°34'42" E



Type	Degree	DMS
Latitude	12.93605178	12°56'10" N
Longitude	77.57838305	77°34'42" E



Type	Degree	DMS
Latitude	12.93605178	12°56'10" N
Longitude	77.57838305	77°34'42" E

Lift & Ramps

No:16, South End Road, Bengaluru-560004 &, No: CA 17, Kengeri Satellite Town, Bengaluru-560060



080-26642292
080-26541095



www.suranacollege.edu.in

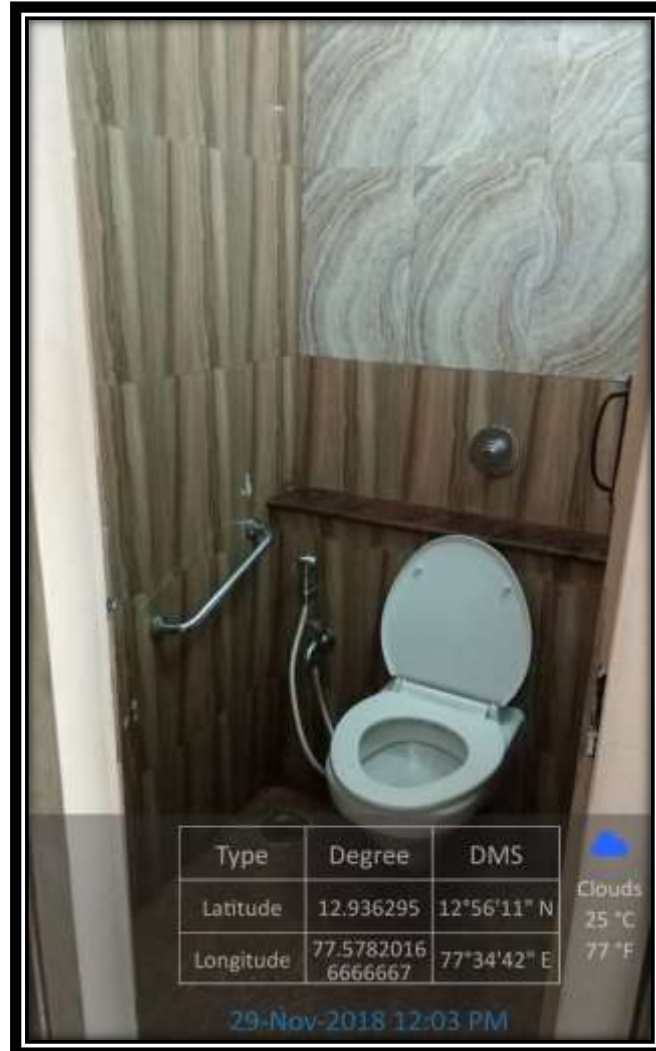


iqac@suranacollege.edu.in



Drinking Water





User Friendly Toilets





Maintenance Chart



UPS

No:16, South End Road, Bengaluru-560004 &, No: CA 17, Kengeri Satellite Town, Bengaluru-560060



080-26642292
080-26541095



www.suranacollege.edu.in



iqac@suranacollege.edu.in



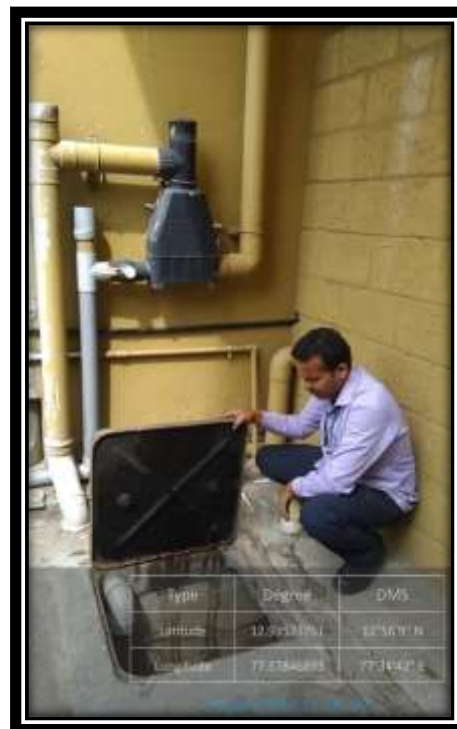
Type	Degree	DMS
Latitude	12.93588398	12°56'9" N
Longitude	77.57829291	77°34'42" E

Generator



Type	Degree	DMS
Latitude	12.93588397	12°56'10" N
Longitude	77.57833445	77°34'42" E

Solar Lighting System



Type	Degree	DMS
Latitude	12.93588397	12°56'9" N
Longitude	77.57840291	77°34'42" E

Rainwater Harvesting

